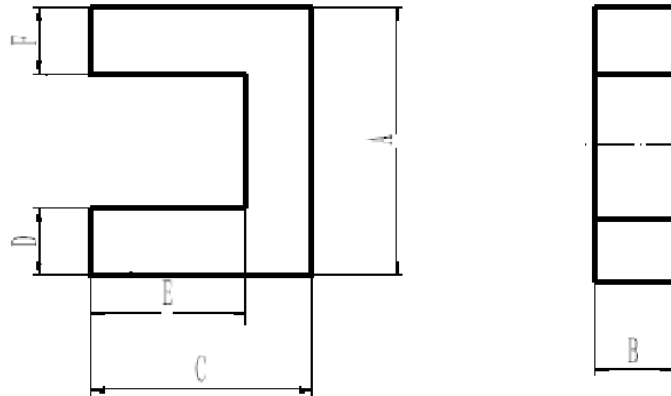


UF cores

UF11.5



CORE SETS

CORE DIMENSIONS (mm)

Dimensions (mm)						Weight (g)
A	B	C	D	E	F	
11.5±0.2	3.4 ⁺⁰ _{-0.3}	14.15±0.2	4.3±0.1	10.55±0.2	4.3±0.1	2.34

Characteristic

Grade	AL (nH/N ²)
	f=100kHz U=1.0V N=20Ts, Φ0.35 mm
DN120L	300±25%