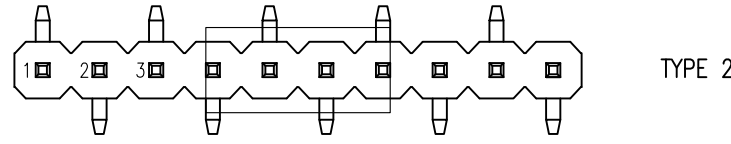
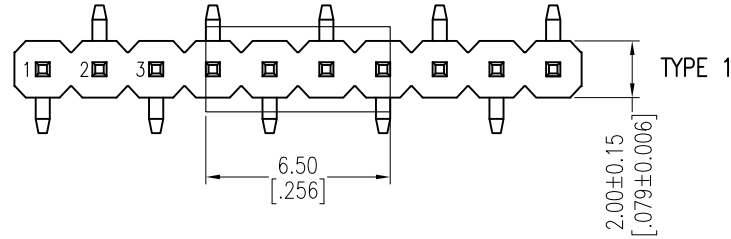


HSF

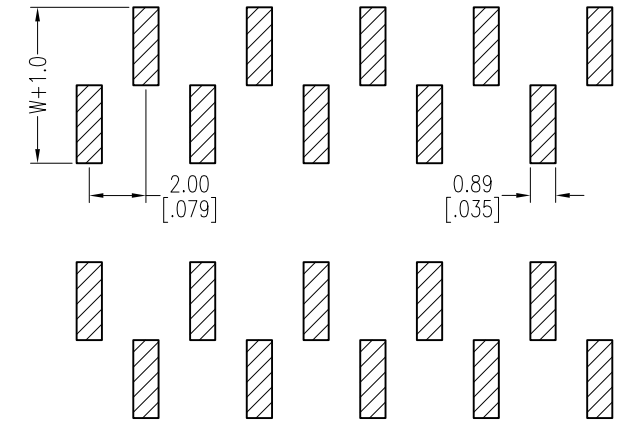
NOTES:

Rated Current:2.0AMP.
 Contact Resistance:20mΩ Max.
 Withstand Voltage:500V AC/DC
 Insulation Resistance:1000MΩ Min.
 Operation Temperature:-40°C to +105°C

Contact Material:Brass
 Contact Plating:Au or Sn Over Ni
 Insulator Material:PA9T+33%G.F UL94V-0 BK



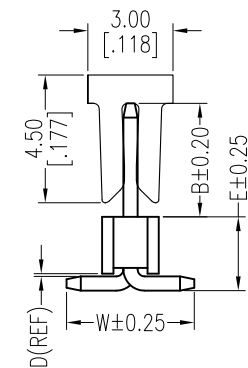
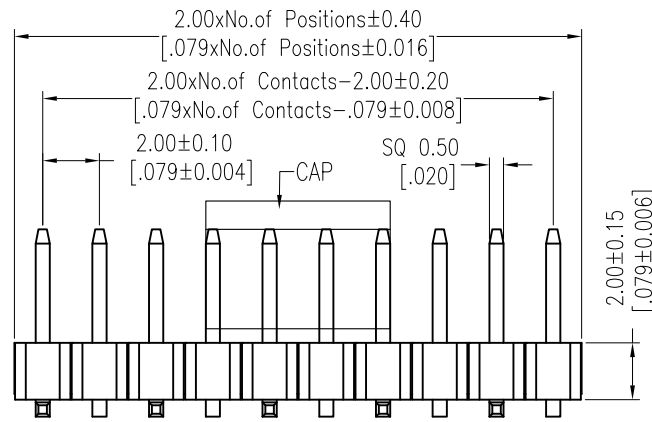
Recommended P.C.B Layout (Top Side)
 (PCB BOARD TOLERANCE±0.05)



Ordering Information

1220-11 XX XX M XXX C R XX

No. of Pins	Contact Plating	Pin Length	Insulator Material	Packing	Series No.
02~40	G0=Gold Flash	L=B+D+2.0+ $\frac{W}{2}$	C=PA9T	T=Tube	01~99
	G3=10u"Gold	Standard:063=6.3	C=PA9T	P=Tube+CAP	
	G4=15u"Gold	073=7.3		R=Tape&Reel+CAP	
	G5=30u"Gold	083=8.3			
	S0=Gold Flash/Tin				
	S3=10u"Gold/Tin				
	S4=15u"Gold/Tin				
	S5=30u"Gold/Tin				
	SN=Tin				
	SM=Matte Tin				



Item	Pin Length	W	E	B	Mating
Standard	6.30	4.50	2.60	2.00	2220T 2221 2227T 2228
	7.30	4.50	2.60	3.00	2235
	8.30	4.50	2.60	4.00	2240 2243 2263 2272
Alternate					

REV	DATE	MODIFICATION DESCRIPTION	CHANGE	OPERATION	DRAW	DATE	SCALE	Fit	PART NO.
				x.X ±0.40	<i>Liu</i>	2018.01.18	UNIT	mm	1220-11XXXXMXXCRXX
A1	2018/01/18	Modify P/N		x.XX ±0.25	CHECK	DATE	SIZE	A4	TITLE: PH2.00 SINGLE ROW SMT H=2.0
AO	2012/04/26	NEW	-----	x.XXX ±0.15	APPROVE	DATE	SHEET	1/1	Customer NO.
				Angle ± 3'			PROJ.		
				DIM TOL					