

# SAW Resonator 868.275 MHz

MODEL NO.: TC0207A

REV. NO.:2

## A. FEATURES:

- 1-Port Resonator.

RoHS Compliant  
Lead free  
Lead-free soldering

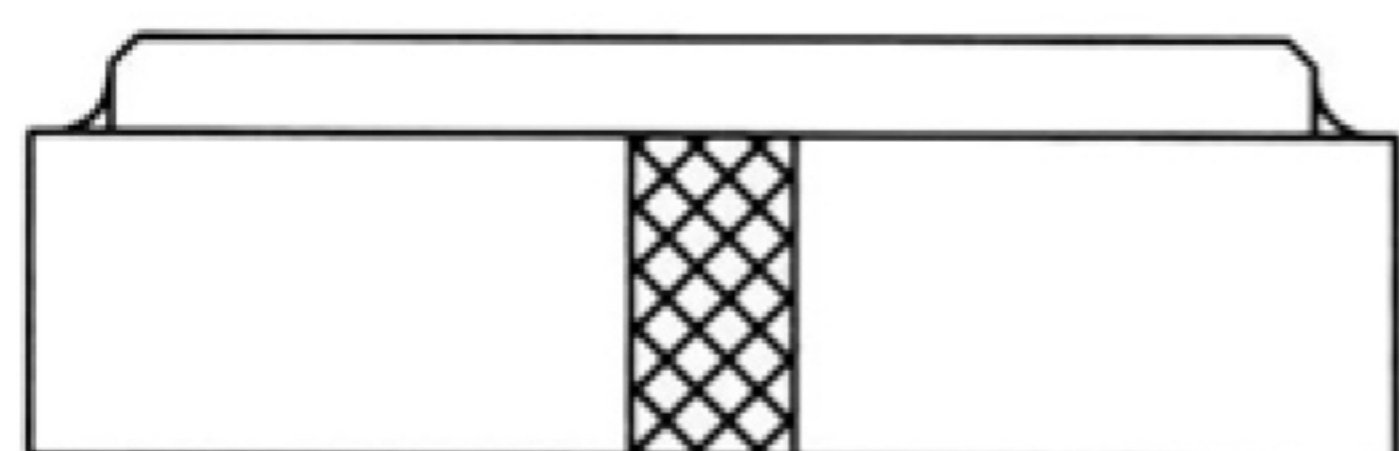
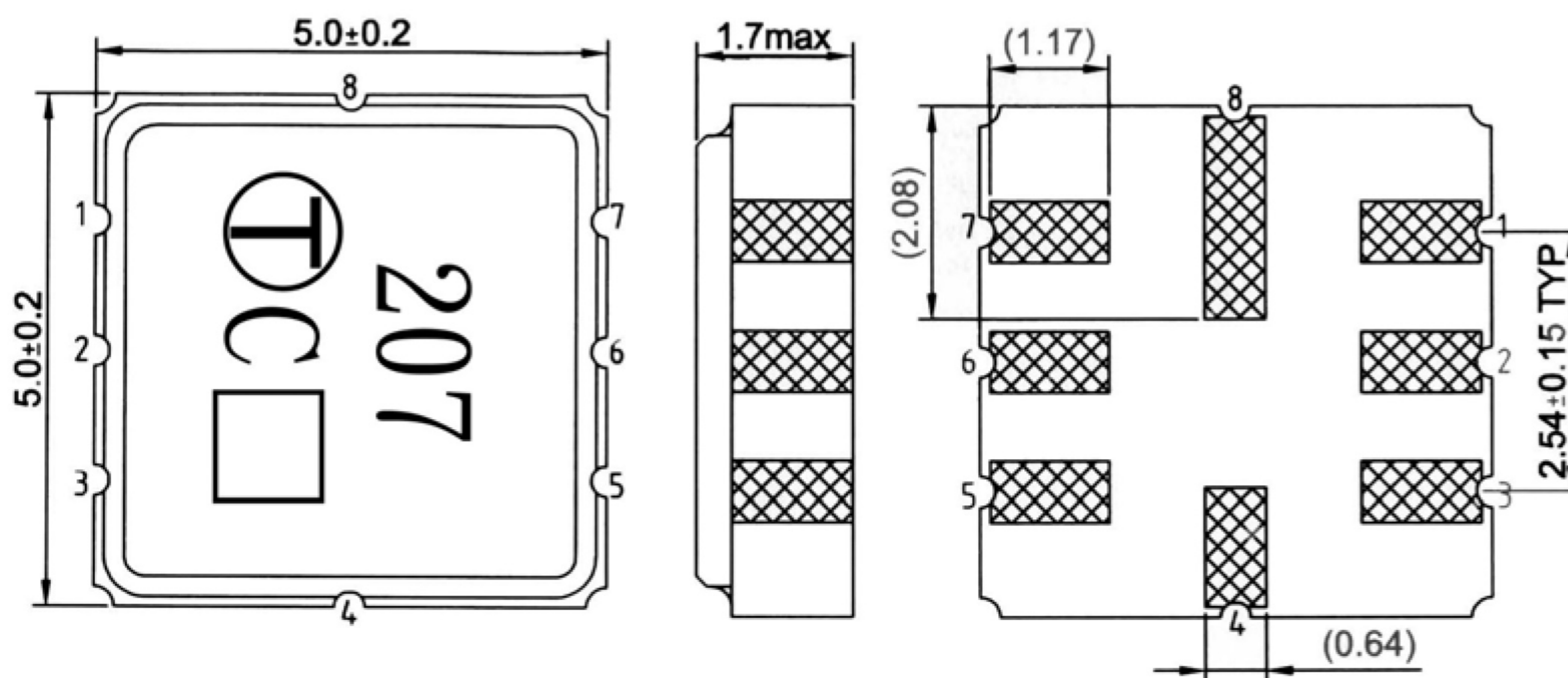
## B. MAXIMUM RATING:

1. Input Power Level: 0 dBm
2. DC voltage: 12 V
3. Operating Temperature: -40°C to +85°C
4. Storage Temperature: -40°C to +85°C

## C. ELECTRICAL CHARACTERISTICS:

Characteristic	Units	Minimum	Typical	Maximum
Center frequency <b>Fr</b>	<b>MHz</b>	868.200	868.275	868.350
Insertion Loss <b>IL</b>	<b>dB</b>	-	1.3	2.5
Equivalent Elements				
Motional capacitance <b>C1</b>	<b>fF</b>	-	1.24	-
Motional inductance <b>L1</b>	<b>μH</b>	-	27.20	-
Motional resistance <b>R1</b>	<b>Ohm</b>	-	17.56	-
Parallel capacitance <b>Co</b>	<b>pF</b>	-	2.52	-
Temp.coeff.	<b>ppm/c*2</b>	-	0.032	-
Turnover To	<b>deg.C</b>	20	25	40
Package size		SMD 5X5X1.4mm		

## D. OUTLINE DRAWING:

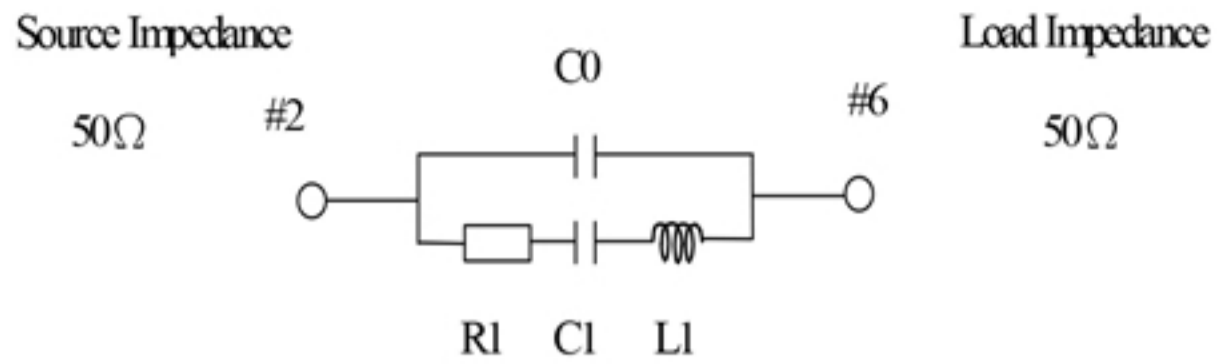


#2 : Input or Output  
 #6 : Output or Input  
 #4、8 : Case Ground  
 #1、3、5、7 : Ground  
 □ : Date code  
 Unit : mm

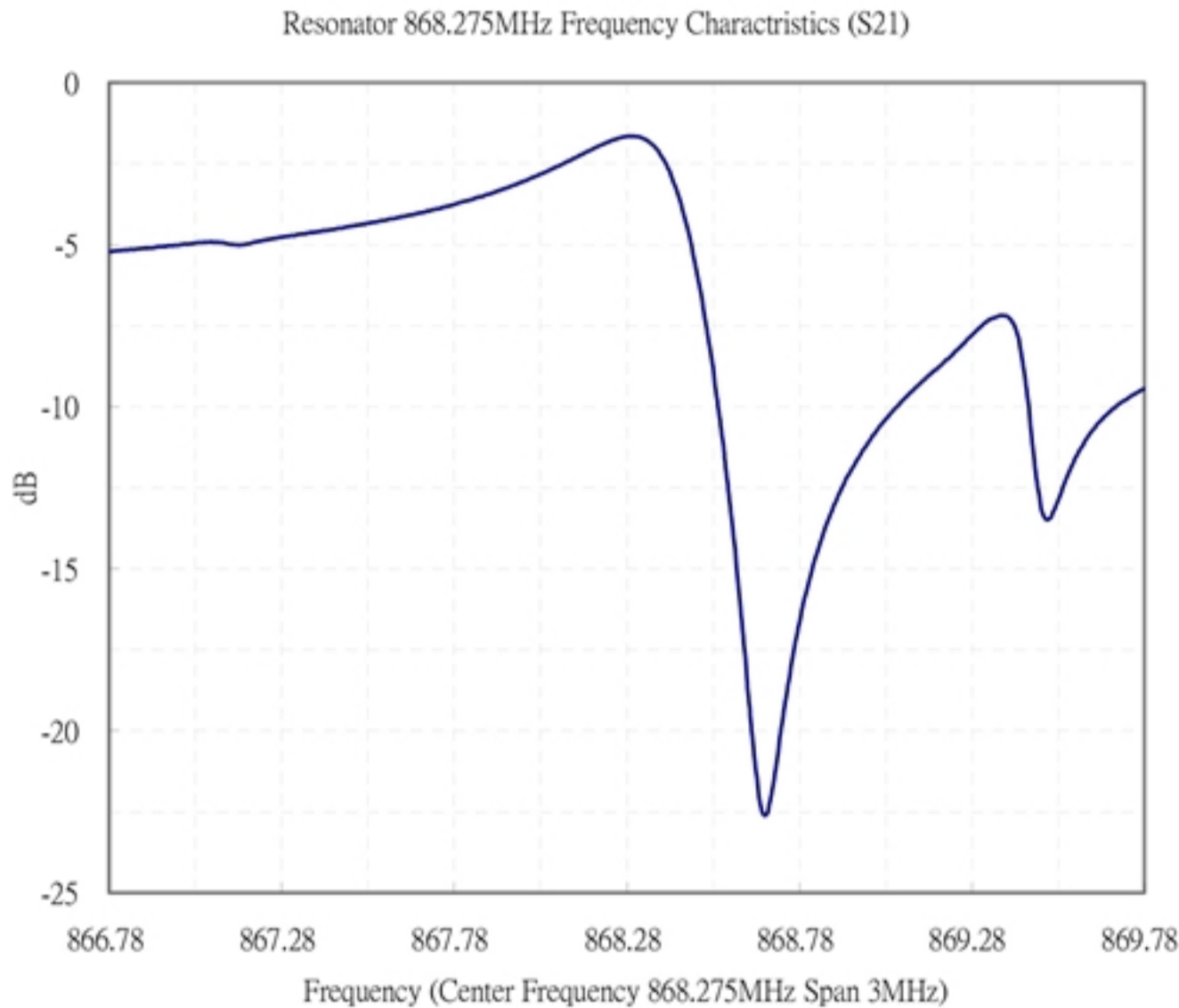


### E. EQUIVALENT CIRCUIT:

One-Port Resonator:

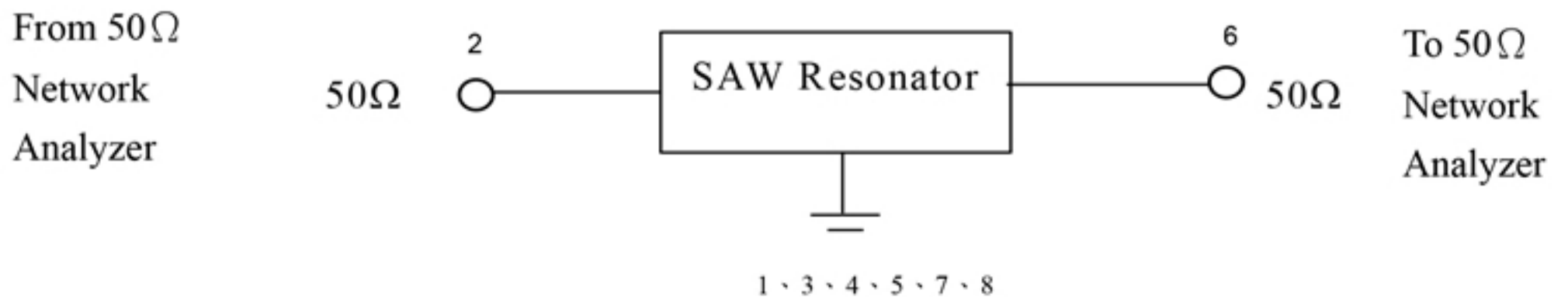


### F. FREQUENCY CHARACTERISTICS:



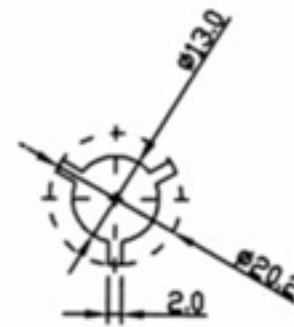
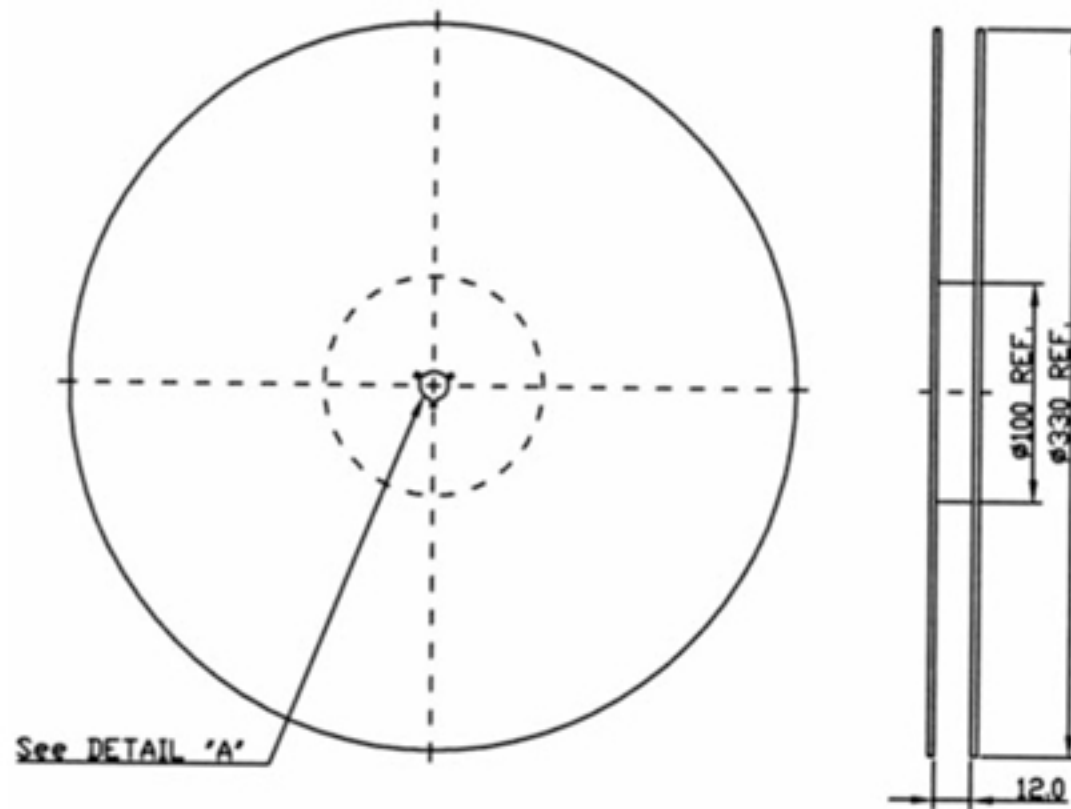
### G. TEST CIRCUIT:

Network analyzer

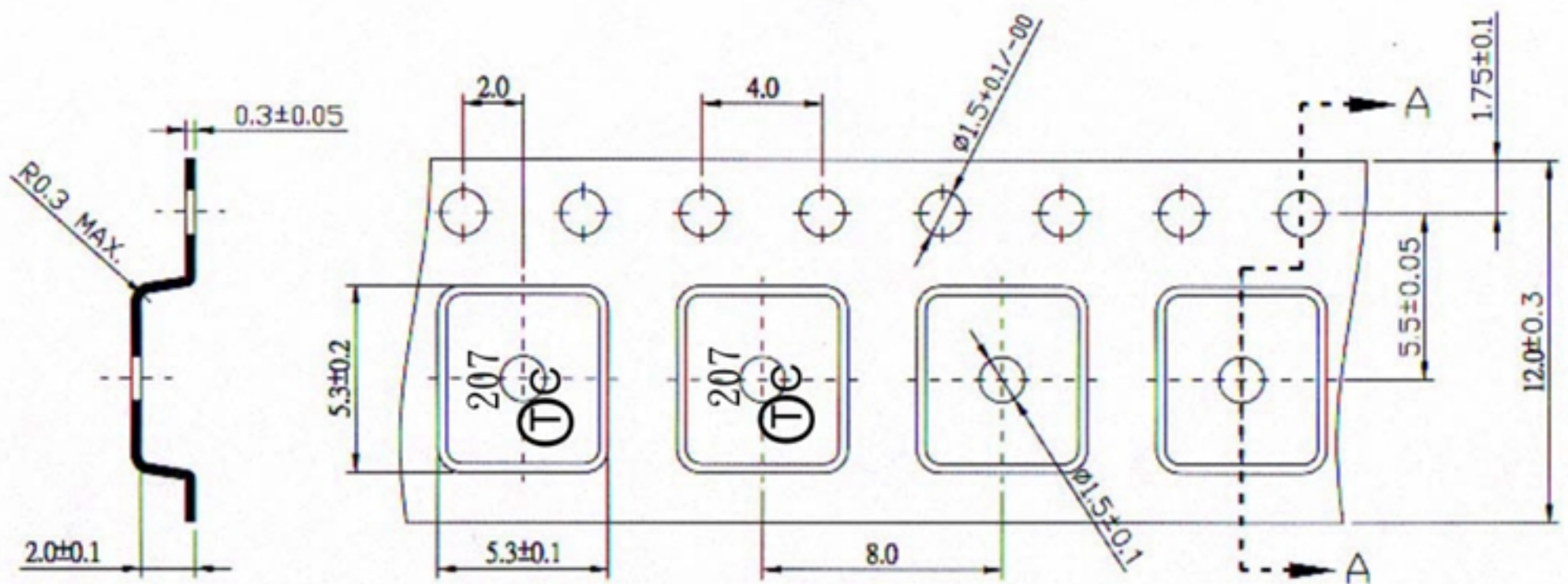


# H. PACKING:

## 1. REEL DIMENSION



## 2. TAPE DIMENSION



Section A-A